

**Principle**

CBC+DIFF/RET: Semi-conductor laser scattering & fluorescent staining method  
 WBC/RBC/PLT counting: Impedance  
 HGB calculating: Cyanide-free colorimetric method

**Parameter**

35 reportable parameters :  
 WBC, Lym%, Mon%, Neu%, Bas%, Eos%, IG%, Lym#, Mon#, Neu#, Eos#, Bas#, IG#, RBC, HGB, HCT, MCV, MCH, MCHC, RDW-CV, RDW-SD, PLT, MPV, PDW, PCT, P-LCR, P-LCC, RET%, RET#, RHE, IRF, LFR, MFR, HFR, IPF  
 29 researchable parameters:  
 WBC-D,TNC-D, IME%, IME#, NLR, PLR, d-NLR, HFC#, HFC%, NRBC#, NRBC%, Micro%, Micro#, Macro%, Macro#, INR#, INR%, H-NR%, L-NR%, PDW-CV, RBC-O, PLT-I, WBC-O, MRV, RPI, IPF#, H-IPF, FRC#, FRC%

**Graph**

3 Histograms + 2\*3D Scattergrams + 8\*2D Scattergrams

**Sample Mode**

Whole blood, capillary blood

**Display**

12.1 inch color screen

**Data Transmission**

USB, LAN port and HL7 with bi-direction LIS are available

**Barcode Scanning**

Automatic rotary barcode scanning.

**Data Storage**

≥150,000

**Printout**

Compatible with multiple print formats with user-defined set

**Extensibility**

Various analyzer combination including double analyzers and customized workflow

**Sampling Mode**

Automatic & manual modes

**Test Mode**

CBC, RET, CBC+DIFF, CBC+RET, CBC+DIFF+RET

**Sample Volume**

Whole blood mode:  
 CBC: 20µL; CBC+DIFF: 30µL; CBC+DIFF+RET: 35µL

**Throughput**

Up to 100T/H

**Operating Environment**

Working Environment: 15°C~32°C;  
 Relative humidity: 30% ~85%;  
 Atmospheric pressure: 70kPa~106kPa

**Power**

Voltage: AC 100V~240V (±10%);  
 Frequency: 50Hz/60Hz(±1 Hz);  
 Power: 660VA

**Size**

W\*D\*H: 660mm\*820mm\*870mm

**Weight**

100Kg

**Reagent**

DIL-N  
 DIN-R  
 LYN-G  
 LYN-D  
 FDN-D  
 FDN-R  
 CLE-P Cleanser

*Pursue THE Ultimate*



**DH-615**

Automatic hematology analyzer

10th Floor, Building B, High-tech Park, Guangqiao Road, Tianliao Community, Yutang Street, Guangming District, Shenzhen 518107, P. R. China

+86-755-26008015-8123  
 www.dymind.com

Intl@dymind.com



# DH-615

Automatic hematology analyzer

## Less & More

Less sample volume: Only 35ul sample volume for CBC+DIFF+RET test.

More considerate feature: Fully auto sampling for capillary blood bring more convenience to operators.



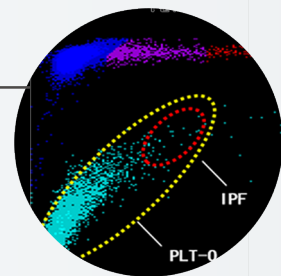
## Extraordinary & Reliable

The powerful combination between semi-conductor laser scattering and fluorescent staining method contributes to extraordinary performance and reliable results. Abnormal cellular information about WBC/RBC/PLT, such as IG/IRF/IPF is available.



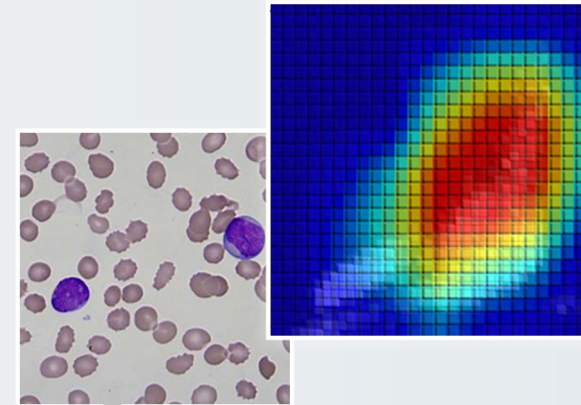
## Efficient & Intelligent

Automatic re-exam function for abnormal samples without manual operation when re-exam rules are triggered, which enhances efficiency for labs.

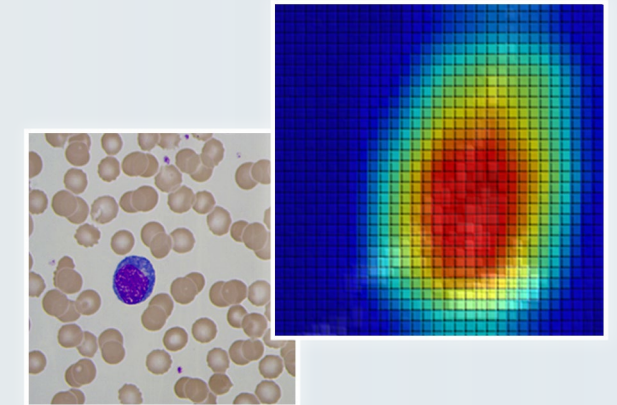


## Comprehensive & Accurate

Comprehensive technologies for PLT with impedance & optical method not only provide much more information of PLT, but also decrease interference of microcytes, which ensures accurate results.



Acute Myeloid Leukemia ( AML)



Infectious Mononucleosis (IM)

DH615 takes the first step in innovation of hematology analyzers with **artificial intelligence (AI) technology**. Beyond the function of analyzing abnormal sample alarms, the possibilities of diseases can also be analyzed, like acute myeloid leukemia (AML), acute lymphoblastic leukemia (ALL), infectious mononucleosis (IM), etc.

DYMIND AI platform will continue to enrich various types of diseases, aiming to improve the level of automatic primary screening of clinical abnormal samples.



The whole process of capillary blood measurement could be finished in 1-2 minutes.

## Diversified Integrated Solution

Modular combination of various analyzers are available.



P/N: EN-DH-50 [1.0]